



*UNITOWER C:*  
The Compact and Standardized Storage System  
for Bar Stock and Sheet Metal.

# UNITOWER C: Flexible Division - System Height up to 7,2 m

Storage room economically used.

This standardized storage system is suited for all applications where a high variety of materials like bar stock or sheet metal need to be stored. A high storage density on smallest area is achieved by height-optimized compartment division. This leads to more order, cleanliness and safety.

All advantages at a glance:

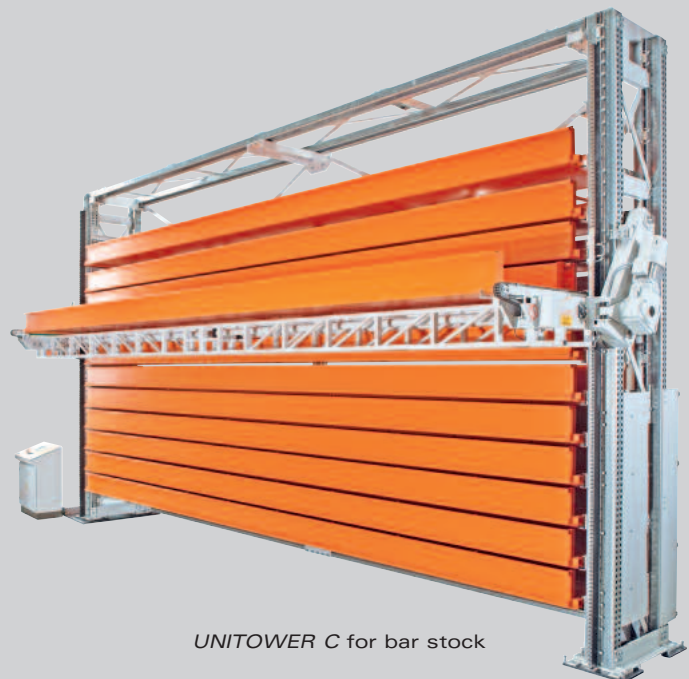
- Economic automatic storage system for bar stock or sheet metal
- Plug-in modular cassette/pallet supports
- Loading and unloading always at an ideal height
- Easy operating by means of selection of storage place and approval key at dead man's operation
- Saving of time due to direct access without additional lifting devices
- Small space requirements by consequent height utilization
- Machine-oriented installation is possible
- Low expenditure for installation (self installation is possible)
- Three different loading heights are selectable

Accessories:

- Socket pin for pallets in order to protect the storage goods against shifting
- Pallet table for pallets with lifting pins to unpack sheet metal and for better handling via forklift or crane
- Automatic control with safety device
- Manually movable station cart to load/unload storage system from the rear
- Socket pins for C-profile cassettes to individually extend loading height



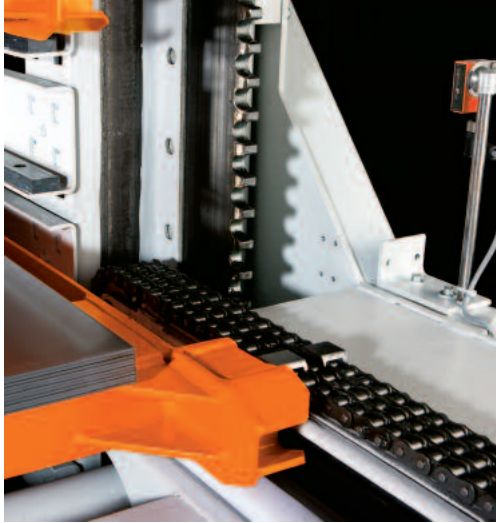
UNITOWER C for sheet metal



UNITOWER C for bar stock



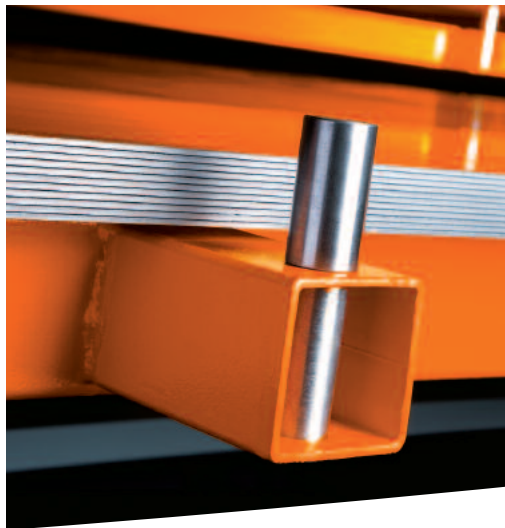
Storage control with preselection of compartment and approval key.



Lifting beam and pallet in sheet metal format with toothed rack and excessive height control as well as steel construction with slide support.



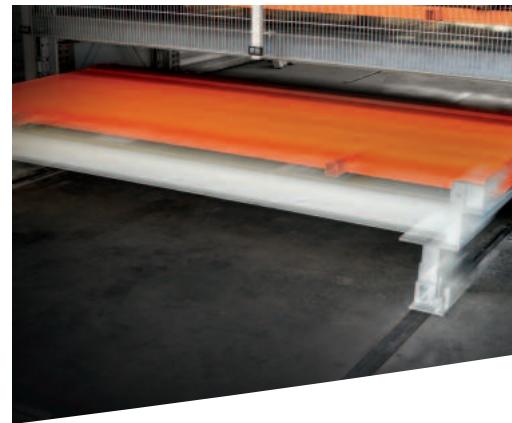
Lifting beam with bar stock cassette and lift motor.



Pallet with socket pins (accessory).



Storage support for free-lift of the loading goods (accessory).



Manually movable lateral cart to feed material from the rear into the storage system (option).

Technical Data	Bar stock		Sheet metal	
Dimensions of storage area large format (WxH)	840 x 6.500 (8.000) mm	33" x 21'3.9" (26'3")	1.524 x 3.048 mm	60" x 120"
Load per pallet	0,8 - 2,5 t	1.760 - 5.500 lbs.	1,2 t / 3,0 t	2.650 lbs./6.615 lbs.
Loading height*	108 - 792 mm	4.25" - 31.18"	51 - 897 mm	2 - 35"
System height	3.080 - 7.200 mm	10' - 23'8"	3.080 - 7.200 mm	10 - 23 2/3'
<b>Space requirement standard version</b>				
Length	approx. 7.950 (9.450) mm	approx. 26' (31')	approx. 4.350 (4.550) mm	approx. 14 1/4' (15')
Width	approx. 2.300 mm	approx. 7.6'	approx. 3.405 mm	approx. 11 1/5'
<b>Space requirement automatic version with extendable safety device</b>				
Length	approx. 8.150 (9.650) mm	approx. 27' (32')	approx. 4.550 (4.750) mm	approx. 15' (15 2/3')
Width	approx. 2.945 mm	approx. 10'	approx. 4.050 mm	approx. 13 1/3'

(Special lengths upon request)

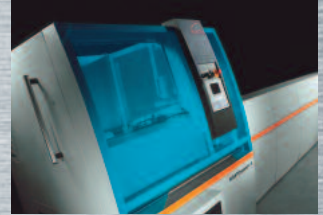
\* in 47 mm / 1,85"-scale

# The Complete KASTO Program: Economic Sawing and Storing of Metal

Expertise right  
down the line.

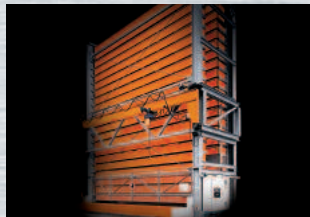
For over 160 years, KASTO has been recognized for quality and innovation, and offers a complete range of metal cutting saws, as well as storage and retrieval systems. Thanks to an ongoing development of new technologies and constant optimization process of machine concepts, KASTO has achieved the status of market leader in sawing and storing of metals.

## KASTO's Sawing Machines



From the basic hacksaw to the high-performance automatic bandsaw capable of economically processing bar stock, blocks or plates of all grades, KASTO has the best solution for every challenge: Universal bandsaws and circular saws for light and medium applications, hacksaws employing the pushing-arching-cutting motion originated by KASTO, and production bandsaws and circular saws designed to cut medium to difficult materials.

## KASTO's Storage Systems



Rapid access, optimum space utilization, clear and accurate view of stored inventory—KASTO storage systems' excelling features. And there's more! Fully automatic sawing centers, cantilever bar and sheet metal storage systems or cassette storage and commissioning systems, combined sawing and storage systems with integrated inventory control computers. As a one-source supplier, KASTO delivers the complete system, both hardware and software.

## KASTO's Service



KASTO's comprehensive service program includes everything: from commissioning and training to maintenance support, service contracts, readily available spare parts and on-site service. KASTO's service incorporates individual consulting and immediate support with well-qualified teleservice. And of course, KASTO service is available worldwide.

Your KASTO Partner



KASTO  
Maschinenbau GmbH & Co. KG  
Industriestr. 14  
77855 Achern/Deutschland  
Telefon +49 7841 61-0  
Telefax +49 7841 61-355  
E-Mail [kasto@kasto.de](mailto:kasto@kasto.de)  
Internet <http://www.kasto.de>